

MAY, 1986

A PLAT OF GREAT POCKET SOUND

BEING A REPLAT OF A PORTION OF LOT 16, HANSON GRANT, COMMISSIONERS SUBDIVISION
PLAT BOOK "B", PAGE 59 DADE (NOW MARTIN) COUNTY, FLA.

I, Louise V. Isaacs,
Clerk of the Circuit
Court of Martin County,
Florida, hereby certify
that this Plat was filed
for record in Plat Book
10, Page 42, Martin
County, Florida, Public
Records, this day
of _____, 1986

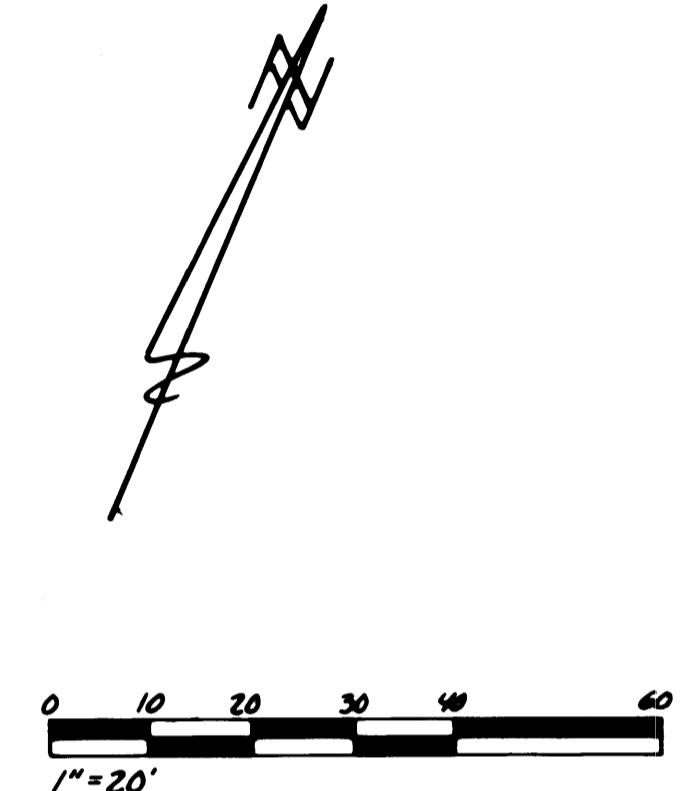
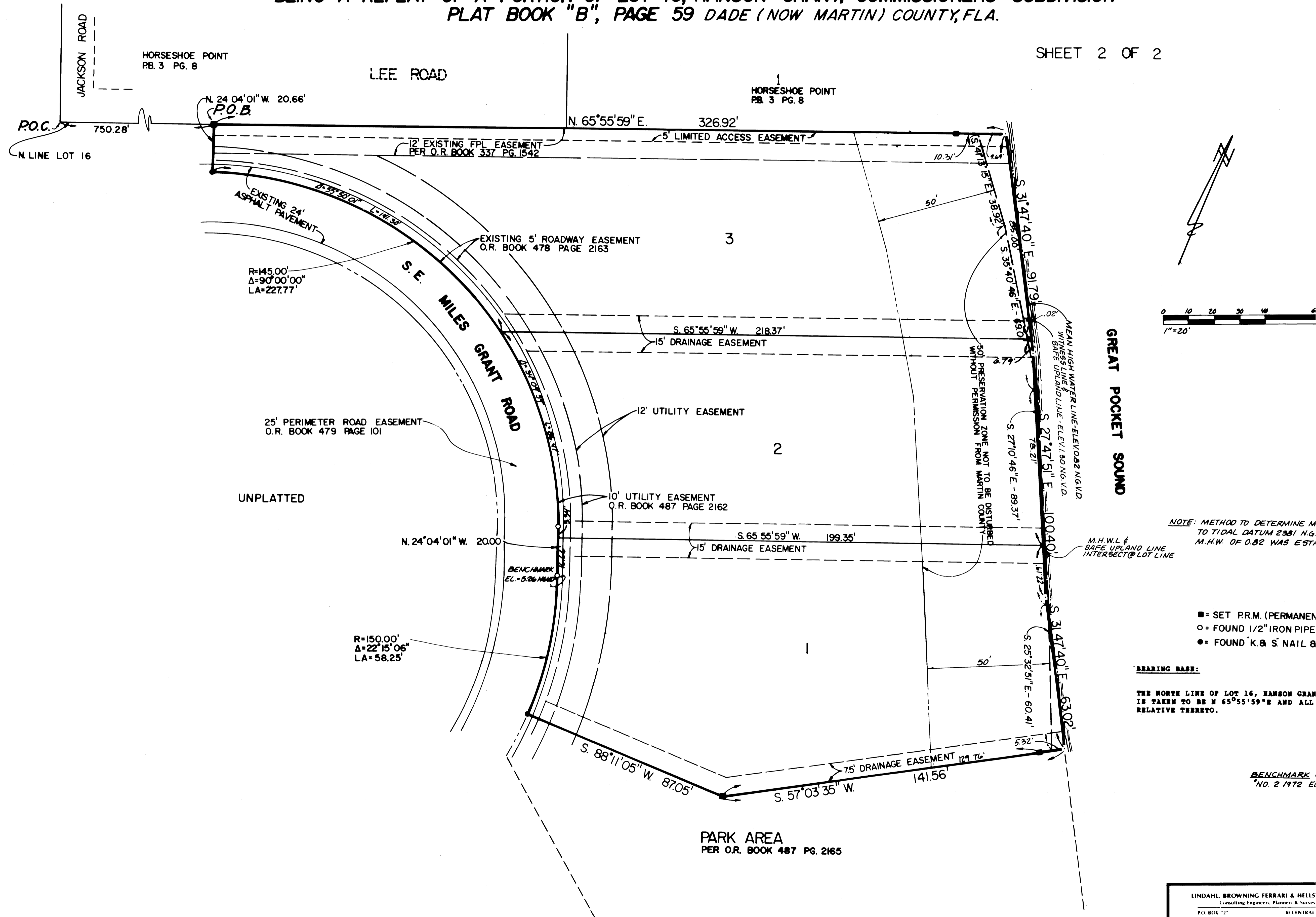
Louise V. Isaacs, Clerk
Circuit Court
Martin County, Florida

By: _____
Deputy Clerk

File No. _____

(Circuit Court Seal)

SHEET 2 OF 2



NOTE: METHOD TO DETERMINE M.H.W.L. BASED ON CLOSE PROXIMITY
TO TIDAL DATUM 2381 N.G.V.D. CONTOUR ELEVATION FOR
M.H.W. OF 0.82 WAS ESTABLISHED IN AREA.

- = SET P.R.M. (PERMANENT REFERENCE MONUMENT)
- = FOUND 1/2" IRON PIPE W/ K & S' CAP
- = FOUND "K & S" NAIL & TIN TAB

BEARING BASE:
THE NORTH LINE OF LOT 16, HANSON GRANT, COMMISSIONERS SUBDIVISION
IS TAKEN TO BE N 65° 55' 59" E AND ALL BEARINGS SHOWN HEREON ARE
RELATIVE THERETO.

BENCHMARK USED IS NOAA
"NO. 2 1972 EL. = 3.72 NGVD.